

Marine Commercial CURSOR 13

C13 825 E

478 kW

Rating type B: 478 kW (650 HP) @ 2400 rpm

Rating type C: 442 kW (600 HP) @ 2400 rpm

Rating type D: - kW (- HP) @ - rpm

SPECIFICATIONS

| | | |
|------------------------------------------------|------------------------------------|-----------|
| Thermodynamic cycle | Diesel 4 stroke | |
| Air handling | TCA | |
| Cylinders arrangement | 6L | |
| Bore x Stroke | millimeters | 135 x 150 |
| Total displacement | liters | 12.9 |
| Valves per cylinder | number | 0.004 |
| Cooling System | liquid | |
| Direction of Rotation (viewed facing flywheel) | CCW | |
| Engine management | by EDC (Electronic Diesel Control) | |
| Injection System | EUI | |

STANDARD CONFIGURATION

| | | |
|------------------------------------------------|----------------------------------------------------------------|----------------|
| Flywheel housing | type | SAE 1 |
| Flywheel size | inch | 14" |
| Air filter | rear side | |
| Turbocharger | e Gate (water cooled) Turbo in parallel with Aftercooler (TCA) | |
| Heat exchanger | tube type | |
| Exhaust gas water mixer - Exhaust cooled elbow | - | |
| Water charge tank | included | |
| Fuel filter | number | 1 - right side |
| Fuel prefilter | included (loose) | |
| Fuel pump | 1 - gear driven | |
| Oil filter | number | 0.002 |
| Oil sump | aluminium | |
| Oil vapours blow-by circuit | included | |
| Oil heat exchanger | included | |
| Oil filler | by cylinder head cover | |
| Starter | 24V - 5.5kW | |
| Alternator | 28 V - 90 A | |
| Engine stop device | by electronic central unit | |
| Wiring harness | with negative to ground connection | |
| Painting color | white "ICE" | |

WEIGHT AND DIMENSIONS

| | | |
|------------|------------|--------------------|
| Dimensions | LxWxH (mm) | 1465 x 1000 x 1058 |
| Dry Weight | Kg | 1395 |

DIMENSIONS CAN BE CHANGED ACCORDING TO ENGINE OPTIONS



MARINE

IMAGES SHOWN ARE FOR ILLUSTRATION PURPOSE ONLY

ELECTRICAL SYSTEM

| | | |
|---------|---|-------|
| Voltage | V | 0.024 |
|---------|---|-------|

NOT INCLUDED IN STANDARD CONFIGURATION

| | | |
|------------------------------------------------------|----|------------|
| Battery - minimum capacity recommended | Ah | 2 x 180 Ah |
| Battery - minimum cold cranking capacity recommended | Ah | 1200 Ah |

LEGEND

| Arrangement | Air Handling | Turbocharger | Injection System | Exhaust System |
|---------------------------|-------------------------------------|-------------------------------------|--------------------------------|-------------------------------------|
| L (in line) | TCA (Turbocharged with aftercooler) | WG (Wastegate) | M (Mechanical) | EGR (Exhaust Gas Recirculation) |
| V (90° "V" configuration) | TC (Turbocharged) | VG (Variable Geometry Turbocharger) | ECR (Electronic Common Rail) | SCR (Selective Catalytic Reduction) |
| | NA (Naturally Aspirated) | TST (Twin Stage Turbocharger) | EUI (Electronic Unit Injector) | |
| | | | MPI (Multi Point Injection) | |

- A1** High Performance Crafts. Full throttle operation restricted within 10% of total use period. Cruising speed at engine rpm <90% of rated speed setting - Maximum usage 300 hours per year.
- A2** Pleasure Commercial Vessels. Full throttle operation restricted within 10% of total use period. Cruising speed at engine rpm <90% of rated speed setting - Maximum usage 1000 hours per year.
- B** Light Duty: Full throttle operation restricted within 10% of use period. Cruising speed at engine rpm <90% of rated speed setting - Maximum usage 1500 hours per year.
- C** Medium Duty: Full throttle operation < 25% of use period. Cruising speed at engine rpm <90% of rated speed setting - Maximum usage 3000 hours per year.
- D** Heavy Duty

FOR INFORMATION ON THE AVAILABLE RATINGS NOT LISTED IN THIS DOCUMENT PLEASE CONTACT THE FPT INDUSTRIAL SALES NETWORK OR VISIT OUR SITE WWW.FPTINDUSTRIAL.COM

SPECIFICATION SUBJECT TO CHANGE WITHOUT NOTICE

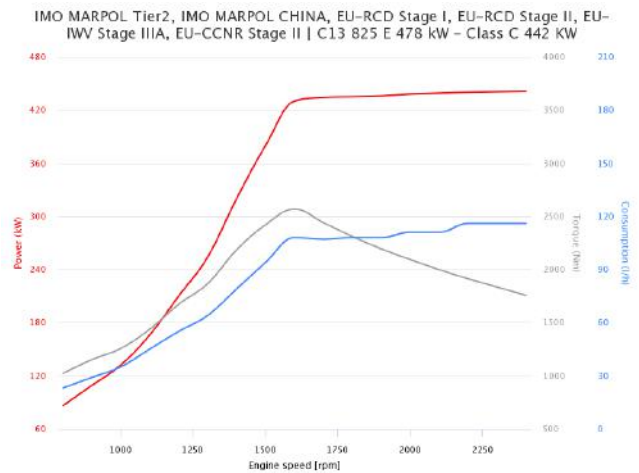
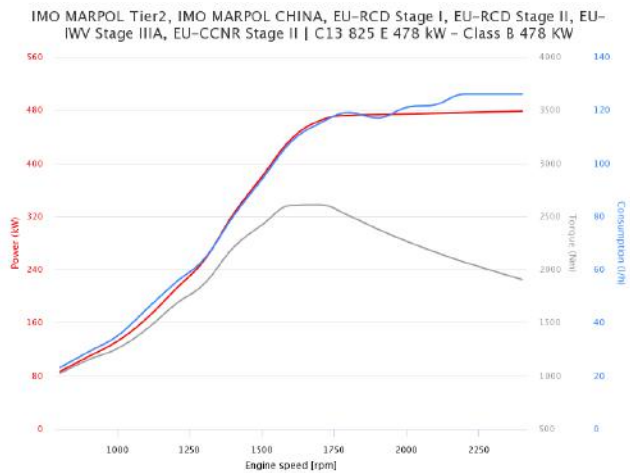


RATING TYPE

| | | B | C | D |
|---------------------------------------------------------|-------------------|--------------|-------------|-------|
| Maximum power [*] | kW (HP) | 478 (650) | 442 (600) | - (-) |
| At speed | rpm | 2400 | 2400 | - |
| Maximum no load governed speed at max rating | rpm | 2580 | 2580 | - |
| Minimum idling speed | rpm | 600 | 600 | - |
| Mean piston speed at rated speed | m/s | 12 | 12 | - |
| BMEP at max power | bar | 17.8 | 16.4 | - |
| Specific fuel consumption at full load (best value) | g/kWh @ rpm | 220.7 @ 2400 | 221.6 @2400 | - |
| Oil consumption at max rating | (% of fuel cons.) | | = 0.2 | |
| Minimum starting temperature without auxiliaries | °C | | -10° | |
| Oil and oil filter maintenance interval for replacement | hours | | 600 | |

* Net Power at flywheel according to ISO 3046/1, after 50 hours running, Fuel Diesel EN 590. Power tolerance 5%.

POWER & TORQUE



MARINE

LEGEND

| Arrangement | Air Handling | Turbocharger | Injection System | Exhaust System |
|---------------------------|-------------------------------------|--------------------------------------|--------------------------------|-------------------------------------|
| L (in line) | TCA (Turbocharged with aftercooler) | WG (Wastegate) | M (Mechanical) | EGR (Exhaust Gas Recirculation) |
| V (90° "V" configuration) | TC (Turbocharged) | VGT (Variable Geometry Turbocharger) | EGR (Electronic Common Rail) | SCR (Selective Catalytic Reduction) |
| | NA (Naturally Aspirated) | TST (Twin Stage Turbocharger) | EUI (Electronic Unit Injector) | |
| | | | MPI (Multi Point Injection) | |

A1 High Performance Crafts. Full throttle operation restricted within 10% of total use period. Cruising speed at engine rpm <90% of rated speed setting - Maximum usage 300 hours per year.
A2 Pleasure Commercial Vessels. Full throttle operation restricted within 10% of total use period. Cruising speed at engine rpm <90% of rated speed setting - Maximum usage 1000 hours per year.

B Light Duty: Full throttle operation restricted within 10% of use period. Cruising speed at engine rpm <90% of rated speed setting - Maximum usage 1500 hours per year.

C Medium Duty: Full throttle operation < 25% of use period. Cruising speed at engine rpm <90% of rated speed setting - Maximum usage 3000 hours per year.

D Heavy Duty

FOR INFORMATION ON THE AVAILABLE RATINGS NOT LISTED IN THIS DOCUMENT PLEASE CONTACT THE FPT INDUSTRIAL SALES NETWORK OR VISIT OUR SITE WWW.FPTINDUSTRIAL.COM

SPECIFICATION SUBJECT TO CHANGE WITHOUT NOTICE

